

IN-LINE PROCESSORS

VISIO WATER



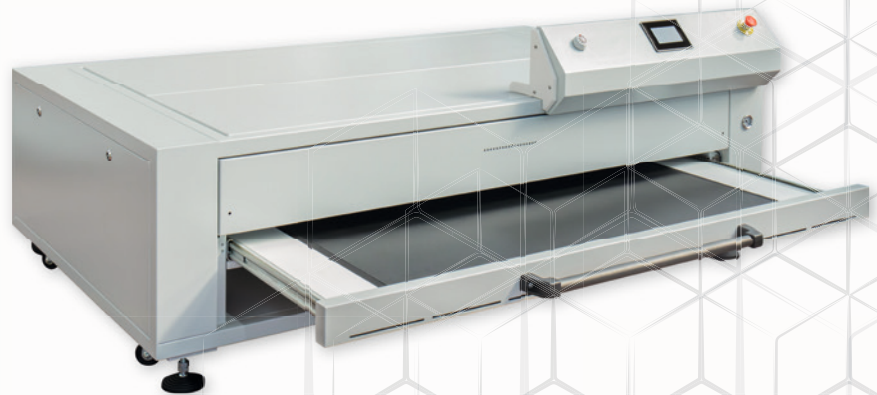
MAIN FEATURES

Automatic In-line processor for water washable photopolymer plates

- Intuitive user-friendly HMI touch screen controlling all the steps of the process
- Sections of the Visio in-line processor:
 - Black mask removal section for digital plates
 - Wash out section
 - Rinsing with fresh water
 - Pre-dryer
 - Dryer
 - Post exposure
- Wash out carried out by two brushes with orbital movement
- Final cleaning through a flat brush
- Air-knife removing excessive water
- Automatic platemaking process, with the possibility to process the plates in sequence
- Remote connection possibility
- Compressed air and water supply required

Optional

- Main exposure unit (designed to fit under the drying tunnel or table top)



TECHNICAL DATA

| | 520 | 760 | 920 | MODEL |
|-------------|--|------------------------|------------------------|-------------------------|
| | 520 x 762 cm 20"x30" | 780x1100 cm 29"x43" | 920x1200 cm 36"x47" | Max. Plate Dimensions |
| with tunnel | 129x485x114 | 150x392x114 | 163x392x114 | Dimension WxDxH cm |
| with tunnel | 500 | 640 | 900 | Weight kg |
| | 400V 3PH+N+GND 50/60Hz 230V 3PH+GND 50/60Hz | | | Power Supply |
| | 11,5 | 13 | 17 | Power kW |
| | 40 | 50 | 58 | Tank Capacity (l) |
| | 1000 | 1200 | 1500 | Air Consumption (l/min) |
| | 6 | 6 | 6 | Pressure (bar) |
| | 4x40W 09 L.900 mm | 4x40W 09 L.1200 mm | 4x40W 09 L.1200 mm | Post-Exposure UVA Lamps |

THE IMAGES IN THIS DOCUMENT ARE PROVIDED FOR ILLUSTRATIVE PURPOSES.
WE RESERVE THE RIGHT TO MAKE CHANGES AND IMPROVEMENTS TO ANY PRODUCT DESCRIBED HEREIN WITHOUT NOTICE.

WWW.AGIGRAPHICS.COM